

See discussions, stats, and author profiles for this publication at: <https://www.researchgate.net/publication/262489570>

Changes in the global value of ecosystem services

Article in *Global Environmental Change* · May 2014

Impact Factor: 5.09 · DOI: 10.1016/j.gloenvcha.2014.04.002

CITATIONS

258

READS

3,789

8 authors, including:



Robert Costanza

Australian National University

443 PUBLICATIONS 33,415 CITATIONS

SEE PROFILE



Paul C. Sutton

University of Denver

69 PUBLICATIONS 6,731 CITATIONS

SEE PROFILE



Sharolyn Anderson

University of South Australia

38 PUBLICATIONS 723 CITATIONS

SEE PROFILE



Ida Kubiszewski

Australian National University

67 PUBLICATIONS 943 CITATIONS

SEE PROFILE



Changes in the global value of ecosystem services



Robert Costanza^{a,*}, Rudolf de Groot^b, Paul Sutton^{c,d}, Sander van der Ploeg^b, Sharolyn J. Anderson^d, Ida Kubiszewski^a, Stephen Farber^e, R. Kerry Turner^f

^a Crawford School of Public Policy, Australian National University, Canberra, Australia

^b Environmental Systems Analysis Group, Wageningen University, Wageningen, The Netherlands

^c Department of Geography, University of Denver, United States

^d Barbara Hardy Institute and School of the Natural and Built Environments, University of South Australia, Australia

^e University of Pittsburgh, United States

^f University of East Anglia, Norwich, UK

ARTICLE INFO

Article history:

Received 12 October 2013

Received in revised form 18 February 2014

Accepted 1 April 2014

Keywords:

Ecosystem services

Global value

Monetary units

Natural capital

ABSTRACT

In 1997, the global value of ecosystem services was estimated to average \$33 trillion/yr in 1995 \$US (\$46 trillion/yr in 2007 \$US). In this paper, we provide an updated estimate based on updated unit ecosystem service values and land use change estimates between 1997 and 2011. We also address some of the critiques of the 1997 paper. Using the same methods as in the 1997 paper but with updated data, the estimate for the total global ecosystem services in 2011 is \$125 trillion/yr (assuming updated unit values and changes to biome areas) and \$145 trillion/yr (assuming only unit values changed), both in 2007 \$US. From this we estimated the loss of eco-services from 1997 to 2011 due to land use change at \$4.3–20.2 trillion/yr, depending on which unit values are used. Global estimates expressed in monetary accounting units, such as this, are useful to highlight the magnitude of eco-services, but have no specific decision-making context. However, the underlying data and models can be applied at multiple scales to assess changes resulting from various scenarios and policies. We emphasize that valuation of eco-services (in whatever units) is not the same as commodification or privatization. Many eco-services are best considered public goods or common pool resources, so conventional markets are often not the best institutional frameworks to manage them. However, these services must be (and are being) valued, and we need new, common asset institutions to better take these values into account.

© 2014 Elsevier Ltd. All rights reserved.

1. Introduction

Ecosystems provide a range of services that are of fundamental importance to human well-being, health, livelihoods, and survival (Costanza et al., 1997; Millennium Ecosystem Assessment (MEA), 2005; TEEB Foundations, 2010; TEEB Synthesis, 2010). Interest in ecosystem services in both the research and policy communities has grown rapidly (Braat and de Groot, 2012; Costanza and Kubiszewski, 2012). In 1997, the value of global ecosystem services was estimated to be around US\$ 33 trillion per year (in 1995 \$US), a figure significantly larger than global gross domestic product

(GDP) at the time. This admittedly crude underestimate of the welfare benefits of natural capital, and a few other early studies (Daily, 1997; de Groot, 1987; Ehrlich and Ehrlich, 1981; Ehrlich and Mooney, 1983; Odum, 1971; Westman, 1977) stimulated a huge surge in interest in this topic.

In 2005, the concept of ecosystem services gained broader attention when the United Nations published its Millennium Ecosystem Assessment (MEA). The MEA was a four-year, 1300-scientist study for policymakers. Between 2007 and 2010, a second international initiative was undertaken by the UN Environment Programme, called the Economics of Ecosystems and Biodiversity (TEEB) (TEEB Foundations, 2010). The TEEB report was picked up extensively by the mass media, bringing ecosystem services to a broader audience. Ecosystem services have now also entered the consciousness of mainstream media and business. The World Business Council for Sustainable Development has actively supported and developed the concept (WBCSD, 2011, 2012). Hundreds of projects and groups are currently working toward

* Corresponding author. Tel.: +61 02 6125 6987.

E-mail addresses: rcostanz@gmail.com, Robert.Costanza@anu.edu.au (R. Costanza), dolf.degroot@wur.nl (R. de Groot), paul.sutton@du.edu (P. Sutton), sander.vanderploeg@wur.nl (S. van der Ploeg), sharolyn.anderson@unisa.edu.au (S.J. Anderson), ida.kub@gmail.com (I. Kubiszewski), efarber@pitt.edu (S. Farber), R.K.Turner@uea.ac.uk (R.K. Turner).

better understanding, modeling, valuation, and management of ecosystem services and natural capital. It would be impossible to list all of them here, but emerging regional, national, and global networks, like the Ecosystem Services Partnership (ESP), are doing just that and are coordinating their efforts (Braat and de Groot, 2012; de Groot et al., 2011).

Probably the most important contribution of the widespread recognition of ecosystem services is that it reframes the relationship between humans and the rest of nature. A better understanding of the role of ecosystem services emphasizes our natural assets as critical components of inclusive wealth, well-being, and sustainability. Sustaining and enhancing human well-being requires a balance of all of our assets—individual people, society, the built economy, and ecosystems. This reframing of the way we look at “nature” is essential to solving the problem of how to build a sustainable and desirable future for humanity.

Estimating the relative magnitude of the contributions of ecosystem services has been an important part of changing this framing. There has been an on-going debate about what some see as the “commodification” of nature that this approach supposedly implies (Costanza, 2006; McCauley, 2006) and what others see as the flawed methods and questionable wisdom of aggregating ecosystem services values to larger scales (Chaisson, 2002). We think that these critiques are largely misplaced once one understands the context and multiple potential uses of ecosystem services valuation, as we explain further on.

In this paper we (1) update estimates of the value of global ecosystem services based on new data from the TEEB study (de Groot et al., 2012, 2010a,b); (2) compare those results with earlier estimates (Costanza et al., 1997) and with alternative methods (Boumans et al., 2002); (3) estimate the global changes in ecosystem service values from land use change over the period 1997–2011; and (4) review some of the objections to aggregate ecosystem services value estimates and provide some responses (Howarth and Farber, 2002).

We do not claim that these estimates are the only, or even the best way, to understand the value of ecosystem services. Quite the contrary, we advocate pluralism based on a broad range of approaches at multiple scales. However, within this range of approaches, estimates of aggregate accounting value for ecosystem services in monetary units have a critical role to play in heightening awareness and estimating the overall level of importance of ecosystem services relative to and in combination with other contributors to sustainable human well-being (Luisetti et al., 2013).

2. What is valuation?

Valuation is about assessing trade-offs toward achieving a goal (Farber et al., 2002). All decisions that involve trade-offs involve valuation, either implicitly or explicitly (Costanza et al., 2011). When assessing trade-offs, one must be clear about the goal. Ecosystem services are defined as the benefits people derive from ecosystems – the support of sustainable human well-being that ecosystems provide (Costanza et al., 1997; Millennium Ecosystem Assessment (MEA), 2005). The value of ecosystem services is therefore the relative contribution of ecosystems to that goal. There are multiple ways to assess this contribution, some of which are based on individual’s perceptions of the benefits they derive. But the support of sustainable human well-being is a much larger goal (Costanza, 2000) and individual’s perceptions are limited and often biased (Kahneman, 2011). Therefore, we also need to include methods to assess benefits to individuals that are not well perceived, benefits to whole communities, and benefits to sustainability (Costanza, 2000). This is an on-going challenge in ecosystem services valuation, but even some of the existing valuation methods like avoided and replacement cost estimates

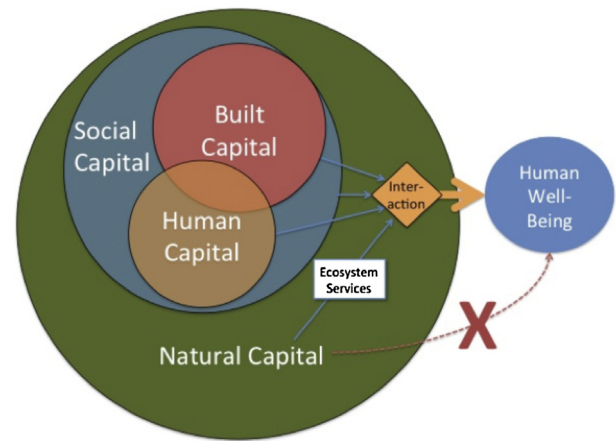


Fig. 1. Interaction between built, social, human and natural capital required to produce human well-being. Built and human capital (the economy) are embedded in society which is embedded in the rest of nature. Ecosystem services are the relative contribution of natural capital to human well-being, they do not flow directly. It is therefore essential to adopt a broad, transdisciplinary perspective in order to address ecosystem services.

are not dependent on individual perceptions of value. For example, estimating the storm protection value of coastal wetlands requires information on historical damage, storm tracks and probability, wetland area and location, built infrastructure location, population distribution, etc. (Costanza et al., 2008). It would be unrealistic to think that the general public understands this complex connection, so one must bring in much additional information not connected with perceptions to arrive at an estimate of the value. Of course, there is ultimately the link to built infrastructure, which people perceive as a benefit and value, but the link is complex and not dependent on the general public’s understanding of or perception of the link.

It is also important to note that ecosystems cannot provide any benefits to people without the presence of people (human capital), their communities (social capital), and their built environment (built capital). This interaction is shown in Fig. 1. Ecosystem services do not flow directly from natural capital to human well-being – it is only through interaction with the other three forms of capital that natural capital can provide benefits. This is also the conceptual valuation framework for the recent UK National Ecosystem Assessment (<http://uknea.unep-wcmc.org>) and the Intergovernmental Platform on Biodiversity and Ecosystem Services (IPBES – <http://www.ipbes.net>). The challenge in ecosystem services valuation is to assess the relative contribution of the natural capital stock in this interaction and to balance our assets to enhance sustainable human well-being.

The relative contribution of ecosystem services can be expressed in multiple units – in essence any of the contributors to the production of benefits can be used as the “denominator” and other contributors expressed in terms of it. Since built capital in the economy, expressed in monetary units, is one of the required contributors, and most people understand values expressed in monetary units, this is often a convenient denominator for expressing the relative contributions of the other forms of capital, including natural capital. But other units are certainly possible (i.e. land, energy, time, etc.) – the choice is largely about which units communicate best to different audiences in a given decision-making context.

3. Valuation is not privatization

It is a misconception to assume that valuing ecosystem services in monetary units is the same as privatizing them or commodifying

them for trade in private markets (Costanza, 2006; Costanza et al., 2012; McCauley, 2006; Monbiot, 2012). Most ecosystem services are public goods (non-rival and non-excludable) or common pool resources (rival but non-excludable), which means that privatization and conventional markets work poorly, if at all. In addition, the non-market values estimated for these ecosystem services often relate more to *use* or *non-use* values rather than *exchange* values (Daly, 1998). Nevertheless, knowing the value of ecosystem services is helpful for their effective management, which in some cases can include economic incentives, such as those used in successful systems of payment for these services (Farley and Costanza, 2010). In addition, it is important to note that valuation is unavoidable. We already value ecosystems and their services every time we make a decision involving trade-offs concerning them. The problem is that the valuation is implicit in the decision and hidden from view. Improved transparency about the valuation of ecosystem services (while recognizing the uncertainties and limitations) can only help to make better decisions.

It is also incorrect to suggest (McCauley, 2006) that conservation based on protecting ecosystem services is betting against human ingenuity. Recognizing and measuring natural capital and ecosystem services in terms of stocks and flows is a prime example of enlightened human ingenuity. The study of ecosystem services has merely identified the limitations and costs of 'hard' engineering solutions to problems that in many cases can be more efficiently solved by natural systems. Pointing out that the 'horizontal levees' of coastal marshes are more cost-effective protectors against hurricanes than constructed vertical levees (Costanza et al., 2008) and that they also store carbon that would otherwise be emitted into the atmosphere (Luisetti et al., 2011) implies that restoring or recreating them for this and other benefits is only using our intelligence and ingenuity, not betting against it.

The ecosystem services concept makes it abundantly clear that the choice of "the environment versus the economy" is a false choice. If nature contributes significantly to human well-being, then it is a major contributor to the *real* economy (Costanza et al., 1997), and the choice becomes how to manage all our assets, including natural and human-made capital, more effectively and sustainably (Costanza et al., 2000).

4. Uses of valuation of ecosystem services

The valuation of ecosystem services can have many potential uses, at multiple time and space scales. Confusion can arise, however, if one is not clear about the distinctions between these uses. Table 1 lists some of the potential uses of ecosystem services valuation, ranging from simply raising awareness to detailed analysis of various policy choices and scenarios. For example, Costanza et al. (1997) was clearly an awareness raising exercise with no specific policy or decision in mind. As its citation history verifies, it was very successful for this purpose. It also pointed out that ecosystem service values could be useful for several of the other purposes listed in Table 1, and it stimulated subsequent

research and application in these areas. There have been thousands of subsequent studies addressing the full range of uses listed in Table 1.

5. Aggregating values

Ecosystem services are often assessed and valued at specific sites for specific services. However some uses require aggregate values over larger spatial and temporal scales (Table 1). Producing such aggregates suffers from many of the same problems as producing any aggregate estimate, including macroeconomic aggregates such as GDP. Table 2 lists a range of possible approaches for aggregating ecosystem service values (Kubiszewski et al., 2013a). Basic benefit transfer, the technique used in Costanza et al. (1997) assumes a constant unit value per hectare of ecosystem type and multiplies that value by the area of each type to arrive at aggregate totals. This can be improved somewhat by adjusting values using expert opinion of local conditions (Batker et al., 2008). Benefit transfer is analogous to the approach taken in GDP accounting, which aggregates value by multiplying price times quantity for each sector of the economy. Our aggregate is an accounting measure of the quantity of ecosystem services (Howarth and Farber, 2002). In this accounting dimension the measure is based on virtual non-market prices and incomes, not real prices and incomes. We return to this point later when we examine some of the criticisms of the original 1997 study.

While simple and easy, this approach obviously glosses over many of the complexities involved. This degree of approximation is appropriate for some uses (Table 1) but ultimately a more spatially explicit and dynamic approach would be preferable or essential for some other uses. These approaches are beginning to be implemented (Bateman et al., 2013; Boumans et al., 2002; Burkhard et al., 2013; Costanza et al., 2008; Costanza and Voinov, 2003; Crossman et al., 2012; Goldstein et al., 2012; Nelson et al., 2009) and this represents the cutting edge of research in this field.

Regional aggregates are useful for assessing land use change scenarios. National aggregates are useful for revising national income accounts. Global aggregates are useful for raising awareness and emphasizing the importance of ecosystem services relative to other contributors to human well-being. In this paper, we provide some updated global estimates, recognizing that this is only one among many potential uses for ecosystem services valuation, and that this use has special requirements, limitations, and interpretations.

6. Estimates of global value

Costanza et al. (1997) estimated the value of 17 ecosystem services for 16 biomes and an aggregate global value expressed in monetary units. This estimate was based on a simple benefit transfer method described above.

Notwithstanding the limitations and restrictions in benefit transfer techniques (Brouwer, 2000; Defra, 2010; Johnston and

Table 1
Range of uses for ecosystem service valuation.

Use of valuation	Appropriate values	Appropriate spatial scales	Precision needed
Raising awareness and interest	Total values, macro aggregates	Regional to global	Low
National income and well-being accounts	Total values by sector and macro aggregates	National	Medium
Specific policy analyses	Changes by policy	Multiple depending on policy	Medium to high
Urban and regional land use planning	Changes by land use scenario	Regional	Low to medium
Payment for ecosystem services	Changes by actions due payment	Multiple depending on system	Medium to high
Full cost accounting	Total values by business, product, or activity and changes by business, product, or activity	Regional to global, given the scale of international corporations	Medium to high
Common asset trusts	Totals to assess capital and changes to assess income and loss	Regional to global	Medium

Table 2
Four levels of ecosystem service value aggregation (Kubiszewski et al., 2013a,b).

Aggregation method	Assumptions/approach	Examples
1. Basic value transfer	Assumes values constant over ecosystem types	Costanza et al. (1997), Liu et al. (2010a,b)
2. Expert modified value transfer	Adjusts values for local ecosystem conditions using expert opinion surveys	Batker et al. (2008)
3. Statistical value transfer	Builds statistical model of spatial and other dependencies	de Groot et al. (2012)
4. Spatially explicit functional modeling	Builds spatially explicit statistical or dynamic systems models incorporating valuation	Boumans et al. (2002), Costanza et al. (2008), Nelson et al. (2009)

Rosenberger, 2010) it is an attractive option for researchers and policy-makers facing time and budget constraints. Value transfer has been used for valuation of environmental resources in many instances. Nelson and Kennedy (2009) provide a critical overview of 140 meta-analyses.

de Groot et al. (2012) estimated the value of ecosystem services in monetary units provided by 10 main biomes (Open oceans, Coral reefs, Coastal systems, Coastal wetlands, Inland wetlands, Lakes, Tropical forests, Temperate forests, Woodlands, and Grasslands) based on local case studies across the world. These studies covered a large number of ecosystems, types of landscapes, different definitions of services, different areas, different levels of scale, time and complexity and different valuation methods. In total, approximately 320 publications were screened and more than 1350 data-points from over 300 case study locations were stored in the Ecosystem Services Value Database (ESVD) (<http://www.fsd.nl/esp/80763/5/0/50>). A selection of 665 of these value data points were used for the analysis. Values were expressed in terms of 2007 'International' \$/ha/year, i.e. translated into US\$ values on the basis of Purchasing Power Parity (PPP) and contains site-, study-, and context-specific information from the case studies. We added some additional estimates for this paper, notably for urban and cropland systems (see Supporting Material for details).

A detailed description of the ESVD is given in van der Ploeg et al. (2010). de Groot et al. (2012) provides details of the results. Below, we provide a comparison of the de Groot et al. (2012) results with the Costanza et al. (1997) results in order to estimate the changes in the flow of ecosystem services over this time period.

After some consolidation of the typologies used in the two studies we can compare the de Groot et al. (2012) estimates per service and per biome with the Costanza et al. (1997) estimates in Table 3, and in more detail in Supporting Material, Table S1. Table S1 lists the mean value for each service and biome for both 1997 and 2011. Table 4 is a summary of the number of estimates, mean, standard deviation, median, and minimum and maximum values used in de Groot et al. (2012). All values are in international \$/ha/yr and were derived from the ESV database. Note that there is a wide range of the number of studies for each biome, ranging from 14 for open ocean to 168 for inland wetlands. This is a significantly larger number of studies than were available for the Costanza et al. study (less than 100). One can also note the wide variation and high standard deviation for several of the biomes. For example, values for coral reefs varied from a low of 36,794 \$/ha/yr to a high of 2,129,122 \$/ha/yr. Given a sufficient number of studies, some of this variation can be explained by other variables. For example, De Groot et al. performed a meta-regression analysis for inland wetlands using 16 independent variables in a model with an adjusted R^2 of 0.442. Variables that were significant in explaining the value of inland wetlands included the area of the study site, the type of inland wetland, GDP/capita, and population of the country in which the wetland occurred, the proximity of other wetlands, and the valuation method used for the study. If this number of studies were available for the other biomes in our global

assessment, we could use this type of meta-regression to produce more accurate estimates. However, for the current estimate, we must continue to rely on global averages.

Global averages per ha may vary between the two time periods we are comparing for three distinct reasons: (1) new (and generally more numerous and complete) estimates of the unit values of ecosystem services per ha; (2) changes in the average functionality of ecosystem per ha; and (3) changes in value per ha due to changes in human, social, or built capital. The actual estimates conflate these causes and we see no way of disentangling them at this point. However, since global population only increased by 16% between 1997 and 2011 (from 5.83 to 7 billion), and, if anything, ecosystems are becoming more stressed and less functional, we can attribute most of the increase in unit values to more comprehensive, value estimates available in 2011 than in 1997.

Table 3 shows that values per ha estimated by de Groot et al. (2012) are an average of 8 times higher than the equivalent estimates from Costanza et al. (1997) (both converted into \$2007). Only inland wetlands and estuaries did not show a significant increase in estimated value per ha, but these were among the best studied biomes in 1997. Some biomes showed significant increases in value. For example, tidal marsh/mangroves increased from around 14,000 to around 194,000 \$/ha/yr. This is largely due to new studies of the storm protection, erosion control, and waste treatment values of these systems. Coral reefs also increased tremendously in estimated value from around 8000 to around 352,000 \$/ha/yr due to additional studies of storm protection, erosion protection, and recreation. Cropland and urban system also increased dramatically, largely because there were almost no studies of these systems in 1997 and there have subsequently been several new studies (Wratten et al., 2013).

Table 3 also shows the aggregate global annual value of services, estimated by multiplying the land area of each biome by the unit values. Column A uses the original values from Costanza et al. (1997) converted to 2007 dollars (total = \$45.9 trillion/yr). If we assume that land areas did not change between the two time periods, the new estimate, shown in column B is \$145 trillion/yr, are more than 3 times larger than the original estimate. This is due solely to updated unit values. However, land use has changed significantly between the two years, changing the supply (the flow) of ecosystem services. If we use the new land use estimates shown in Table 3 (see Supporting Material for details) and the 1997 unit values, we get the estimates in column C – a total of \$41.6 trillion/yr. Column E is the change in value due to land use change using the 1997 unit values. Marine systems show a slight increase in value, while terrestrial systems show a large decrease. This decrease is largely due to decreases in the area of high value per ha biomes (tropical forests, wetlands, and coral reefs – shown in red in Table 3) and increases in low value per ha biomes. The total net decrease is estimated to be \$4.3 trillion/yr. It is almost certain that the functionality of ecosystems per ha has also declined in many cases so the supply effects are surely greater than this. Column D

Table 3

Changes in area, unit values and aggregate global flow values from 1997 to 2011 (green are values that have increased, red are values that have decreased).

Biome	A. Original			B. Change unit values only			C. Change area only			D. Change both unit values and area			E. Column C - Column A		F. Column D - Column B	
	Assuming 1997 area and 1997 unit values			Assuming 1997 area and 2011 unit values			Assuming 2011 area and 1997 unit values			Assuming 2011 area and 2011 unit values			2011-1997 Change in Value e12 2007\$/yr		1997 unit values 2011 unit values	
	Area (e6 ha)			Unit values 2007\$/ha/yr			Aggregate Global Flow Value e12 2007\$/yr			Change in Value e12 2007\$/yr						
	1997	2011	Change 2011-1997	1997	2011	Change 2011-1997	1997	2011	2011	2011	2011	1997 unit values	2011 unit values			
Marine	36,302	36,302	0	796	1,368	572	28.9	60.5	29.5	49.7	0.6	(10.9)				
Open Ocean	33,200	33,200	0	348	660	312	11.6	21.9	11.6	21.9	-	-				
Coastal	3,102	3,102	0	5,592	8,944	3,352	17.3	38.6	18.0	27.7	0.6	(10.9)				
Estuaries	180	180	0	31,509	28,916	-2,593	5.7	5.2	5.7	5.2	-	-				
Seagrass/Algae Beds	200	234	34	26,226	28,916	2,690	5.2	5.8	6.1	6.8	0.9	1.0				
Coral Reefs	62	28	-34	8,384	352,249	343,865	0.5	21.7	0.2	9.9	(0.3)	(11.9)				
Shelf	2,660	2,660	0	2,222	2,222	0	5.9	5.9	5.9	5.9	-	-				
Terrestrial	15,323	15,323	0	1,109	4,901	3,792	17.0	84.5	12.1	75.1	(4.9)	(9.4)				
Forest	4,855	4,261	-594	1,338	3,800	2,462	6.5	19.5	4.7	16.2	(1.8)	(3.3)				
Tropical	1,900	1,258	-642	2,769	5,382	2,613	5.3	10.2	3.5	6.8	(1.8)	(3.5)				
Temperate/Boreal	2,955	3,003	48	417	3,137	2,720	1.2	9.3	1.3	9.4	0.0	0.2				
Grass/Rangelands	3,898	4,418	520	321	4,166	3,845	1.2	16.2	1.4	18.4	0.2	2.2				
Wetlands	330	188	-142	20,404	140,174	119,770	6.7	36.2	3.4	26.4	(3.3)	(9.9)				
Tidal Marsh/Mangroves	165	128	-37	13,786	193,843	180,057	2.3	32.0	1.8	24.8	(0.5)	(7.2)				
Swamps/Floodplains	165	60	-105	27,021	25,681	-1,340	4.5	4.2	1.6	1.5	(2.8)	(2.7)				
Lakes/Rivers	200	200	0	11,727	12,512	785	2.3	2.5	2.3	2.5	-	-				
Desert	1,925	2,159	234	-	-	0	-	-	-	-	-	-				
Tundra	743	433	-310	-	-	0	-	-	-	-	-	-				
Ice/Rock	1,640	1,640	0	-	-	0	-	-	-	-	-	-				
Cropland	1,400	1,672	272	126	5,567	5,441	0.2	7.8	0.2	9.3	0.0	1.5				
Urban	332	352	20	-	6,661	6,661	-	2.2	-	2.3	-	0.1				
Total	51,625	51,625	0				45.9	145.0	41.6	124.8	(4.3)	(20.2)				

shows the combined effects of both changes in land areas and updated unit values. The net effect yields an estimate of \$124.8 trillion/yr – 2.7 times the original estimate. For comparison, global GDP was approximately 46.3 trillion/yr in 1997 and \$75.2 trillion/yr in 2011 (in \$2007).

The difference between columns D and B is the estimated loss of ecosystem services based on land use changes and using the 2011 unit value estimates. This is shown in column F. In this case marine systems show a large loss (\$10.9 trillion/yr), due mainly to a decrease in coral reef area and the substantially larger unit value for coral reef using the 2011 unit values. Terrestrial systems also show a large loss, dominated by tropical forests and wetlands, but countered by small increases in the value of grasslands, cropland, and urban systems. Overall, the total net decrease is estimated to be \$20.2 trillion in annual services since 1997. Given the more comprehensive unit values employed in the 2011 estimates, this is a better approximation than using the 1997 unit values, but

certainly still a conservative estimate. The present value of the discounted flow of ecosystem services consumed would represent part of the stock of inclusive wealth lost/gained over time (UNU-IHDP, 2012).

As we have previously noted, basic value transfer is a crude first approximation at best. We could put ranges on these numbers based on the standard deviations shown in Table 4, but there are other sources of error and caveats as well, as described in Costanza et al. including errors in estimating land use changes. However, we think that solving these problems will most likely lead to even larger estimates. For example, one problem is the limited number of valuation studies available and we expected that as more studies became available from 1997 to 2011 the unit value estimates would increase, and they did.

We also anticipate that more sophisticated techniques for estimating value will lead to larger estimates. For example, more sophisticated integrated dynamic and spatially explicit modeling

Table 4

Summary of the number of estimates, mean, standard deviation, median, minimum and maximum values used in de Groot et al. (2012). Values are in international \$/ha/yr, derived from the ESV database.

	No. of estimates	Total of service means (TEV)	Total of St. Dev. of means	Total of median values	Total of minimum values	Total of maximum values
Open oceans	14	491	762	135	85	1664
Coral reefs	94	352,915	668,639	197,900	36,794	2129,122
Coastal systems	28	28,917	5045	26,760	26,167	42,063
Coastal wetlands	139	193,845	384,192	12,163	300	887,828
Inland wetlands	168	25,682	36,585	16,534	3018	104,924
Rivers and lakes	15	4267	2771	3938	1446	7757
Tropical forest	96	5264	6526	2355	1581	20,851
Temperate forest	58	3013	5437	1127	278	16,406
Woodlands	21	1588	317	1522	1373	2188
Grasslands	32	2871	3860	2698	124	5930

techniques have been developed and applied at regional scales (Barbier, 2007; Bateman et al., 2013; Bateman and Jones, 2003; Costanza and Voinov, 2003; Goldstein et al., 2012; Nelson et al., 2009). However, few have been applied at the global scale. One example is the Global Unified Metamodel of the Biosphere (GUMBO) that was developed specifically to simulate the integrated earth system and assess the dynamics and values of ecosystem services (Boumans et al., 2002). GUMBO is a 'metamodel' in that it represents a synthesis and simplification of several existing dynamic global models in both the natural and social sciences at an intermediate level of complexity. It includes dynamic feedbacks among human technology, economic production, human welfare, and ecosystem goods and services within and across 11 biomes. The dynamics of eleven major ecosystem goods and services for each of the biomes have been simulated and evaluated. A range of future scenarios representing different assumptions about future technological change, investment strategies and other factors, have been simulated. The relative value of ecosystem services in terms of their contribution to supporting both conventional economic production and human well-being more broadly defined were estimated under each scenario. The value of global ecosystem services was estimated to be about 4.5 times the value of Gross World Product (GWP) in the year 2000 using this approach. For a current global GDP of \$75 trillion/yr this would be about \$347 trillion/yr, or almost three times the column D estimate in Table 3. This is to be expected since the dynamic simulation can include a more comprehensive picture of the complex interdependencies involved. It is also important to note that this type of model is the only way to potentially assess more than marginal changes in ecosystem services, including irreversible thresholds and tipping points (Rockström et al., 2009; Turner et al., 2003).

7. Caveats and misconceptions

We want to make clear that expressing the value of ecosystem services in monetary units does not mean that they should be treated as private commodities that can be traded in private markets. Many ecosystem services are public goods or the product of common assets that cannot (or should not) be privatized (Wood, 2014). Even if fish and other provisioning services enter the market as private goods, the ecosystems that produce them (i.e. coastal systems and oceans) are common assets. Their value in monetary units is an estimate of their benefits to society expressed in units that communicate with a broad audience. This can help to raise awareness of the importance of ecosystem services to society and serve as a powerful and essential communication tool to inform better, more balanced decisions regarding trade-offs with policies that enhance GDP but damage ecosystem services.

Some have argued that estimating the global value of ecosystem services is meaningless, because if we lost all ecosystem services human life would end, so their value must be infinite (Chaisson, 2002). While this is certainly true, as was clearly pointed out in the 1997 paper (Costanza et al., 1997), it is a simple misinterpretation of what our estimate refers to. Our estimate is more analogous to estimating the total value of agriculture in national income accounting. Whatever the fraction of GDP that agriculture contributes now, it is clear that if all agriculture were to stop, economies would collapse to near zero. What the estimates are referring to, in both cases, is the *relative* contribution, expressed in monetary units, of the assets or activities at the current point in time. Referring to Fig. 1, human well-being comes from the interaction of the four basic types of capital shown. GDP picks up only a fraction of this total contribution (Costanza et al., 2014; Kubiszewski et al., 2013b). What we have estimated is the relative

contribution of natural capital now, with the current balance of asset types. Some of this contribution is already included in GDP, embedded in the contribution of natural capital to marketed goods and services. But much of it is not captured in GDP because it is embedded in services that are not marketed or not fully captured in marketed products and services. Our estimate shows that these services (i.e. storm protection, climate regulation, etc.) are much larger in relative magnitude right now than the sum of marketed goods and services (GDP). Some have argued that this result is impossible, wrongly assuming that all of our value estimates are based on willingness-to-pay and that that cannot exceed aggregate ability-to-pay (i.e. GDP). But for it to be impossible, one would have to argue that *all* human benefits are marketed and captured in GDP. This is obviously not the case. Another example is the many other types of goods and services traded on "black markets" that in some countries far exceed GDP. Moreover, our estimate is an accounting measure based on virtual not real prices and incomes and it is these virtual total expenditures that should not be exceeded (Costanza et al., 1998; Howarth and Farber, 2002). It is also important for policy to evaluate gains/losses in stocks and consequent service flows (analogous to net GDP). The discounted present value of such stock/flow changes is a measure of a component of inclusive wealth or wellbeing.

8. Conclusions

The concepts of ecosystem services flows and natural capital stocks are increasingly useful ways to highlight, measure, and value the degree of interdependence between humans and the rest of nature. This approach is complementary with other approaches to nature conservation, but provides conceptual and empirical tools that the others lack and it communicates with different audiences for different purposes. Estimates of the global accounting value of ecosystem services expressed in monetary units, like those in this paper, are mainly useful to raise awareness about the magnitude of these services relative to other services provided by human-built capital at the current point in time. Our estimates show that global land use changes between 1997 and 2011 have resulted in a loss of ecosystem services of between \$4.3 and \$20.2 trillion/yr, and we believe that these estimates are conservative. One should not underestimate the importance of the change in awareness and worldview that these global estimates can facilitate – it is a necessary precursor to practical application of the concept using changes in the flows of services for decision-making at multiple scales. It allows us to build a more comprehensive and balanced picture of the assets that support human well-being and human's interdependence with the well-being of all life on the planet.

Acknowledgements

The TEEB study was funded by the German, UK, Dutch, Swedish, Norwegian and Japanese governments, and coordinated by UNEP and the TEEB-offices (UFZ, Bonn, Germany and in Geneva, Switzerland) who provided financial and logistic support for the development of the database. We thank the Crawford School of Public Policy at Australian National University and the Barbara Hardy Institute at the University of South Australia for support during the preparation of this manuscript. We also thank four anonymous reviewers for their helpful comments on earlier drafts.

Appendix A. Supplementary data

Supplementary data associated with this article can be found, in the online version, at [doi:10.1016/j.gloenvcha.2014.04.002](https://doi.org/10.1016/j.gloenvcha.2014.04.002).

References

- Barbier, E.B., 2007. Valuing ecosystem services as productive inputs. *Econ. Policy* 22, 177–229.
- Bateman, I.J., Harwood, A.R., Mace, G.M., Watson, R.T., Abson, D.J., Andrews, B., Binner, A., Crowe, A., Day, B.H., Dugdale, S., Fezzi, C., Foden, J., Hadley, D., Haines-Young, R., Hulme, M., Kontoleon, A., Lovett, A.A., Munday, P., Pascual, U., Paterson, J., Perino, G., Sen, A., Siriwardena, G., van Soest, D., Termansen, M., 2013. Bringing ecosystem services into economic decision-making: land use in the United Kingdom. *Science* 341, 45–50.
- Bateman, I.J., Jones, A.P., 2003. Contrasting conventional with multi-level modelling approaches to meta-analysis: expectation consistency in UK woodland recreation values. *Land Econ.* 79, 235–258.
- Batker, D., Swedeen, P., Costanza, R., de la Torre, I., Boumans, R., Bagstad, K., 2008. A New View of the Puget Sound Economy: The Economic Value of Nature's Services in the Puget Sound Basin. *Earth Economics*, Tacoma, WA.
- Boumans, R., Costanza, R., Farley, J., Wilson, M.A., Portela, R., Rotmans, J., Villa, F., Grasso, M., 2002. Modeling the dynamics of the integrated earth system and the value of global ecosystem services using the GUMBO model. *Ecol. Econ.* 41, 529–560.
- Braat, L., de Groot, R., 2012. The ecosystem services agenda: bridging the worlds of natural science and economics, conservation and development, and public and private policy. *Ecosyst. Serv.* 1, 4–15.
- Brouwer, R., 2000. Environmental value transfer: state of the art and future prospects. *Ecol. Econ.* 32, 137–152.
- Burkhard, B., Crossman, N., Nedkov, S., Petz, K., Alkemade, R., 2013. Mapping and modelling ecosystem services for science, policy and practice. *Ecosyst. Serv.* 4, 1–146.
- Chaisson, E.J., 2002. *Cosmic Evolution: The Rise of Complexity in Nature*. Harvard University Press, Cambridge, MA.
- Costanza, R., 2000. Social goals and the valuation of ecosystem services. *Ecosystems* 3, 4–10.
- Costanza, R., 2006. Nature: ecosystems without commodifying them. *Nature* 443, 749.
- Costanza, R., d'Arge, R., de Groot, R., Farber, S., Grasso, M., Hannon, B., Limburg, K., Naeem, S., O'Neill, R.V., Paruelo, J., Raskin, R.G., Sutton, P., van den Belt, M., 1998. The value of ecosystem services: putting the issues in perspective. *Ecol. Econ.* 25, 67–72.
- Costanza, R., Daly, M., Folke, C., Hawken, P., Holling, C.S., McMichael, A.J., Pimentel, D., Rapport, D., 2000. Managing our environmental portfolio. *Bioscience* 50, 149–155.
- Costanza, R., d'Arge, R., de Groot, R., Farber, S., Grasso, M., Hannon, B., Limburg, K., Naeem, S., O'Neill, R.V., Paruelo, J., Raskin, R.G., Sutton, P., van den Belt, M., 1997. The value of the world's ecosystem services and natural capital. *Nature* 387, 253–260.
- Costanza, R., Kubiszewski, I., 2012. The authorship structure of ecosystem services as a transdisciplinary field of scholarship. *Ecosyst. Serv.* 1, 16–25.
- Costanza, R., Kubiszewski, I., Ervin, D., Bluffstone, R., Boyd, J., Brown, D., Chang, H., Dujon, V., Granek, E., Polasky, S., Shandas, V., Yeakley, A., 2011. Valuing ecological systems and services. *F1000 Biol. Rep.* 3, 14.
- Costanza, R., Kubiszewski, I., Giovannini, E., Lovins, H., McGlade, J., Pickett, K.E., Ragnarsdottir, K.V., Roberts, D., De Vogli, R., Wilkinson, R., 2014. Time to leave GDP behind. *Nature* 505, 283–285.
- Costanza, R., Pérez-Maqueo, O., Martinez, M.L., Sutton, P., Anderson, S.J., Mulder, K., 2008. The value of coastal wetlands for hurricane protection. *AMBIO: J. Hum. Environ.* 37, 241–248.
- Costanza, R., Quatrini, S., Øystese, S., 2012. Response to George Monbiot: The Valuation of Nature and Ecosystem Services is Not Privatization. Responding to Climate Change (RTCC).
- Costanza, R., Voinov, A., 2003. *Landscape Simulation Modeling: A Spatially Explicit, Dynamic Approach*. Springer, New York.
- Crossman, N., Burkhard, B., Nedkov, S., 2012. Quantifying and mapping ecosystem services. *J. Biodivers. Sci. Ecosyst. Serv. Manage.* 8, 1–185.
- Daily, G.C., 1997. *Nature's Services: Societal Dependence on Natural Ecosystems*. Island Press, Washington, DC.
- Daly, H.E., 1998. The return of Lauderdale's paradox. *Ecol. Econ.* 25, 21–23.
- de Groot, R., 1987. Environmental functions as a unifying concept for ecology and economics. *Environmentalist* 7, 105–109.
- de Groot, R., Brander, L., van der Ploeg, S., Costanza, R., Bernard, F., Braat, L., Christie, M., Crossman, N., Ghermandi, A., Hein, L., Hussain, S., Kumar, P., McVittie, A., Portela, R., Rodriguez, L.C., ten Brink, P., van Beukering, P., 2012. Global estimates of the value of ecosystems and their services in monetary units. *Ecosyst. Serv.* 1, 50–61.
- de Groot, R., Costanza, R., Broeck, D.V.D., Aronson, J., Burkhard, B., Gomez-Baggethun, E., Haines-Young, R., Kubiszewski, I., Muller, F., Petrosillo, I., Potschin, M., Ploeg, S.V.D., Zurlini, G., 2011. A global partnership for ecosystem services. *Solutions* 2, 42–43.
- de Groot, R.S., Fisher, B., Christie, M., Aronson, J., Braat, L., Haines-Young, R., Gowdy, J., Maltby, E., Neuville, A., Polasky, S., Portela, R., Ring, I., 2010. Integrating the ecological and economic dimensions in biodiversity and ecosystem service valuation. In: Kumar, P. (Ed.), *The Economics of Ecosystems and Biodiversity: Ecological and Economic Foundations*. Earthscan, London.
- de Groot, R.S., Kumar, P., van der Ploeg, S., Sukhdev, P., 2010. Estimates of monetary values of ecosystem services. In: Kumar, P. (Ed.), *The Economics of Ecosystems and Biodiversity: Ecological and Economic Foundations*. Earthscan, London.
- Defra, 2010. *Improving the Use of Environmental Valuation in Policy Appraisal: A Value Transfer Strategy*. Defra, London.
- Ehrlich, P., Ehrlich, A., 1981. *Extinction: The Causes and Consequences of the Disappearance of Species*. Random House, New York.
- Ehrlich, P.R., Mooney, H.A., 1983. Extinction, substitution, and ecosystem services. *Bioscience* 33, 248–254.
- Farber, S.C., Costanza, R., Wilson, M.A., 2002. Economic and ecological concepts for valuing ecosystem services. *Ecol. Econ.* 41, 375–392.
- Farley, J., Costanza, R., 2010. Payments for ecosystem services: from local to global. *Ecol. Econ.* 69, 2060–2068.
- Goldstein, J.H., Caldarone, G., Duarte, T.K., Ennaanay, D., Hannahs, N., Mendoza, G., Polasky, S., Wolny, S., Daily, G.C., 2012. Integrating ecosystem-service tradeoffs into land-use decisions. *Proc. Natl. Acad. Sci. U.S.A.* 109, 7565–7570.
- Howarth, R.B., Farber, S., 2002. Accounting for the value of ecosystem services. *Ecol. Econ.* 41, 421–429.
- Johnston, R.J., Rosenberger, R.S., 2010. Methods, trends and controversies in contemporary benefit transfer. *J. Econ. Surv.* 24, 479–510.
- Kahneman, D., 2011. *Thinking Fast and Slow*. Farrar, Straus and Giroux, New York.
- Kubiszewski, I., Costanza, R., Dorji, P., Thoennes, P., Tshering, K., 2013. An initial estimate of the value of ecosystem services in Bhutan. *Ecosyst. Serv.* 3, e11–e21.
- Kubiszewski, I., Costanza, R., Franco, C., Lawn, P., Talberth, J., Jackson, T., Aylmer, C., 2013. Beyond GDP: measuring and achieving global genuine progress. *Ecol. Econ.* 93, 57–68.
- Liu, S., Costanza, R., Farber, S., Troy, A., 2010a. Valuing ecosystem services: theory, practice and the need for a trans-disciplinary synthesis *Ecological Economics Reviews*. Book Series: Annals of the New York Academy of Sciences, vol. 1185. , pp. 54–78.
- Liu, S., Costanza, R., Troy, A., D'Aagostino, J., Mates, W., 2010b. Valuing New Jersey's ecosystem services and natural capital: a spatially explicit benefit transfer approach. *Environ. Manage.* 45, 1271–1285.
- Luisetti, T., Bateman, I.J., Turner, R.K., 2011. Testing the fundamental assumption of choice experiments. *Land Econ.* 87, 284–296.
- Luisetti, T., Jackson, E.L., Turner, R.K., 2013. Valuing the European coastal blue carbon storage benefit. *Mar. Pollut. Bull.* 71, 101–106.
- McCauley, D.J., 2006. Selling out on nature. *Nature* 443, 27–28.
- Millennium Ecosystem Assessment (MEA), 2005. *Ecosystems and Human Well-Being: Synthesis*. Island Press, Washington, DC.
- Monbiot, G., 2012. Putting a price on the rivers and rain diminishes us all. *The Guardian*.
- Nelson, E., Mendoza, G., Regetz, J., Polasky, S., Tallis, H., Cameron, D.R., Chan, K.M.A., Dailey, G.C., Goldstein, J., Dareiva, P.M., Lansdorf, E., Naidoo, R., Ricketts, T.H., Shaw, M.R., 2009. Modeling multiple ecosystem services, biodiversity conservation, commodity production, and tradeoffs at landscape scales. *Front. Ecol. Environ.* 7, 4–11.
- Nelson, J.P., Kennedy, P.E., 2009. The use (and abuse) of meta-analysis in environmental and natural resource economics: an assessment. *Environ. Resour. Econ.* 42, 345–377.
- Odum, H.T., 1971. *Environment, Power and Society*. John Wiley, New York.
- Rockström, J., Steffen, W., Noone, K., Persson, Å., Chapin, F.S., Lambin, E.F., Lenton, T.M., Scheffer, M., Folke, C., Schellnhuber, H.J., Nykvist, B., de Wit, C.A., Hughes, T., van der Leeuw, S., Rodhe, H., Sörlin, S., Snyder, P.K., Costanza, R., Svedin, U., Falkenmark, M., Karlberg, L., Corell, R.W., Fabry, V.J., Hansen, J., Walker, B., Liverman, D., Richardson, K., Crutzen, P., Foley, J.A., 2009. A safe operating space for humanity. *Nature* 461, 472–475.
- TEEB Foundations, 2010. *The Economics of Ecosystems and Biodiversity: Ecological and Economic Foundations*. Earthscan, London and Washington.
- TEEB Synthesis, 2010. *Mainstreaming the Economics of Nature: A Synthesis of the Approach, Conclusions and Recommendations of TEEB*. Earthscan, London and Washington.
- Turner, R.K., Paaivola, J., Cooper, P., Farber, S., Jessamy, V., Georgiou, S., 2003. Valuing nature: lessons learned and future research directions. *Ecol. Econ.* 46, 493–510.
- UNU-IHDP, 2012. *Inclusive Wealth Report: Measuring Progress Toward Sustainability*. UNU-IHDP, Bonn.
- van der Ploeg, S., De Groot, R.S., Wang, Y., 2010. In: Development, F.F.S. (Ed.), *The TEEB Valuation Database: Overview of Structure, Data, and Results*. Wageningen, The Netherlands.
- WBCSD, 2011. *Guide to Corporate Ecosystem Valuation: A Framework for Improving Corporate Decision-Making*. Geneva, Switzerland.
- WBCSD, 2012. *Biodiversity and Ecosystem Services: Scaling Up Business Solutions. Company Case Studies that Help Achieve Global Biodiversity Targets*. Geneva, Switzerland.
- Westman, W.E., 1977. How much are nature's services worth? *Science* 197, 960–964.
- Wood, M.C., 2014. *Nature's Trust: Environmental Law for a New Ecological Age*. Cambridge University Press, Cambridge, UK.
- Wratten, S., Sandhu, H., Cullen, R., Costanza, R., 2013. *Ecosystem Services in Agricultural and Urban Landscapes*. Wiley-Blackwell, Oxford, UK.

Supporting Material

Details of Updated Unit Value Estimates

Table S1 shows the values for 17 ecosystem services in 16 ecosystems, both marine and terrestrial. Ecosystems service values between 1997 and 2011 were compared; all values in the table were converted to US\$2007 (a 1.38 inflation conversion was used between 1997 and 2011). Rows with 1997 values for each of the ecosystem services come directly from the Costanza et al 1997 paper. Rows with 2011 values come from three sources. Most values are from de Groot et al. 2012 (no highlight). These were supplemented with a few values from Costanza et al 1997 (yellow highlight) when no updates were available but the service had obviously not disappeared and the 1997 estimate was still the best available. In addition we added estimates for agricultural and urban systems that were not included in de Groot et al. 2012 directly from the ESV database (red highlight). Area weighted averages are shown for some aggregated biomes. For example, the values for coastal are the area weighted averages for estuaries, seagrass, coral reefs and shelf.

Because the ecosystem categories in de Groot et al. 2012 do not completely align with the ones in this paper, some adjustments were made. These include making coastal wetlands equivalent to tidal marshes/mangroves, inland wetlands equivalent to swamps/floodplains, and not including woodlands as a separate category as they were incorporated into forests and grasslands.

The four columns at the right show aggregate total values estimated by multiplying the area figures by the unit values. In column A, the 1997 land cover areas were used and the 1997 unit values (in US\$2007). The \$US45.9 trillion is the \$33 Trillion/yr result as in Costanza et al. 1997 updated to \$2007. In column B, the 1997 land cover areas were used but with the 2011 unit values, showing the difference the new values make when fourteen years of land cover change is not considered. In column C, the 2011 land area was used multiplied by the 1997 unit values, showing the results if the values were not updated but the land cover changed. In column D, both the 2011 land area and the 2011 unit values were used.

Areal extent of Global Land Cover

The approach to characterizing the type and areal extent of global land cover is influenced by the need to attribute numerous and diverse economic valuation studies to particular land cover types. The “new high-resolution data bases” described by Elaine Matthews (*1*) is still very coarse by today’s standards (one degree by one degree or ~10,000 km² pixels at the equator). At this spatial resolution many land covers get lost by aggregation (e.g. urban, riparian areas, and wetlands). Consequently we relied to a great extent on the areal extent of land cover provided in other references for some land covers that are important but can only be measured at finer spatial resolution (*2-4*) (Durr et al. 2011). For

this update we are taking a similar approach that is informed by the same basic principles. We are obtaining best estimates of the same 16 basic land cover types: Open Ocean, Estuaries, Seagrass/Algae Beds, Coral Reefs, Shelf, Tropical Forest, Temperate/Boreal Forest, Grass/Rangelands, Tidal Marsh/Mangroves, Swamps/Floodplains, Lakes/Rivers, Desert, Tundra, Ice/Rock, Cropland, and Urban.

The state of the art of global mapping of land cover has progressed significantly since the mid 1990's which has spawned a diverse assortment of land cover data products in a diverse assortment of classification schemes and spatial resolutions. A brief perusal of the USGS land cover institute's web site provides a sense of these developments over the last 15 years (<http://landcover.usgs.gov/landcoverdata.php>). Our determination of the best global representation of land cover relevant to this inquiry was the GlobCover data set produced by the European Space Agency in partnership with the United Nations Food and Agriculture Organization (http://www.esa.int/esaCP/SEMZ16L26DF_index_0.html). The GlobCover classification scheme is a good match to the 1997 classification scheme and it includes improved measures of the spatial extent of wetlands, water bodies, and urban areas. One issue for utilizing the GlobCover measures of land cover was the lack of a category for 'Tundra'. The GlobCover categories of 'lakes/rivers', 'grassland/rangeland' and 'ice and rock' were all significantly higher than the areal extents used in the 1997 paper. We chose to hold the areal extent of 'ice/rock' and 'lakes/rivers' constant and attribute the difference to the 'tundra' category. This still represents a 'loss' of 'tundra' that is probably a classification issue captured in the 'grass/rangelands' category.

This update of the areal extent of land cover would ideally only represent true changes to the actual land surfaces of the earth that have taken place over the time span. Nonetheless, some of the differences can undoubtedly be attributed simply to improvements in our ability to map, classify, and measure the surface of the earth. The 'urban' category provides a case in point. The land cover classification 'urban' can be discussed and argued about at great length. In any case, the 1997 number of 337 million hectares represents an estimate of terrestrial urbanization at roughly 2.2%. We know urban extent has increased over the past 15 years despite the great discrepancies in measurements of urban extent (5). Conservative MODIS based measures of urban extent are on the order of 65 million ha (~0.5% of the land), the GlobCover dataset is 31 million ha (~0.24% of the land), and the Global Rural-Urban Mapping Project (6) estimates urban extent at 352 million hectares (~2.74% of the land). We used the GRUMP number to show a modest (~4%) increase in urban extent over the time period in question. The importance of the 'urban' category relative to measures of the economic value of 'natural' capital manifests primarily in the idea that human well-being is increased via the interaction of social, natural, built, and human capital and 'urban' is the spatial location of a significant fraction of built, human, and social capital. Conservative estimates of 'urban' consequently can dramatically minimize the nature of the spatial interactions that occur between natural, human, social, and built capital.

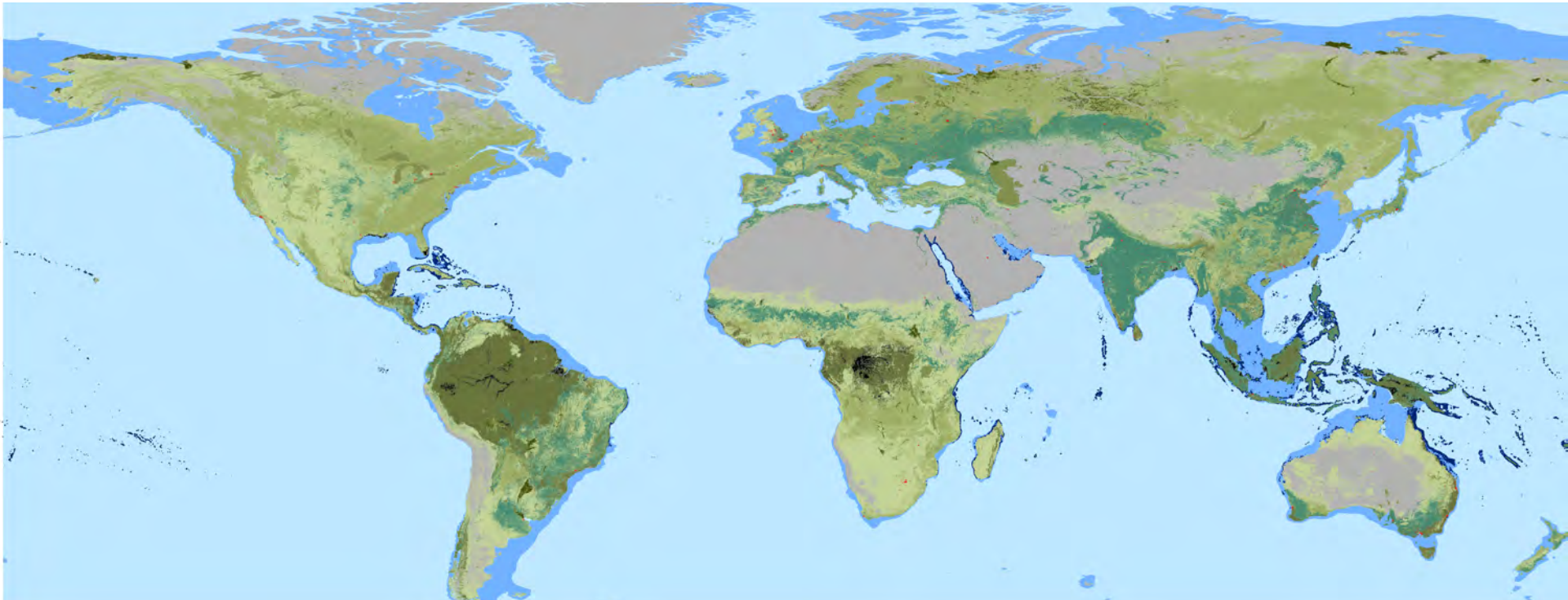
Figure S1 shows global land cover converted to ecosystem service value using the 2011 unit values shown in Table S1.

References

Worldwide Typology of Nearshore Coastal Systems: Defining the Estuarine Filter of River Inputs to the Oceans Hans H. Dürr & Goulven G. Laruelle & Cheryl M. van Kempen & Caroline P. Slomp & Michel Meybeck & Hans Middelkoop *Estuaries and Coasts* (2011) 34:441–458 DOI 10.1007/s12237-011-9381-y

1. E. Matthews, *Global vegetation and land-use: new high-resolution data bases for climate studies*. *J. Clim. Appl. Meteorol.* **22**, 474 (1983).
2. R. G. Bailey, *Ecosystem Geography*. (Springer, New York, 2009).
3. R. de Groot, *Functions of Nature: Evaluation of Nature in Environmental Planning, Management, and Decision Making*. (Wolters-Noordhoff, Groningen, 1992).
4. UNEP-WCMC, "The World Atlas of Coral Reefs" (United Nations Environment Programme World Conservation Monitoring Centre (UNEP-WCMC), 2012).
5. A. Schneider, M. A. Friedl, D. Potere, *Mapping global urban areas using MODIS 500-m data: new methods and datasets based on 'urban ecoregions'*. *Remote Sensing of Environment* **114**, (2010).
6. CIESIN. (Center for International Earth Science Information Network (CIESIN), 2004), vol. 2012.

Figure S1. Map of global annual ecosystem services based on 2011 land areas and 2011 unit values



LandCover	Flow Value per Hectare per year	Legend	Area (millions of hectares)
Desert	\$0		2159
Tundra	\$0		433
Ice/Rock	\$0		1640
Open Ocean	\$491		33200
Marine Shelf	\$2,222		2660
Grass/Rangelands	\$2,871		4418
Temperate/Boreal Forest	\$3,013		3003
Lakes/Rivers	\$4,267		200
Tropical Forest	\$5,264		1258
Cropland	\$5,567		1672
Urban	\$6,661		352
Swamps/Floodplains	\$25,682		60
Tidal Marsh/Mangroves	\$193,845		128
Coral Reefs	\$352,249		28

Table S1. Summary of global land areas, average unit values and aggregate global totals of annual ecosystem services by biome. Grey columns are 1997 estimates, white are 2011.

CPI conv. 1997 to 2011 = 1.38

Biome	1997 Area (e6 ha)	2011 Area (e6 ha)	Ecosystem Services (2007 US\$ ha-1 yr-1)																		Ha Re				
			1 Gas Regulation		2 Climate Regulation		3 Disturbance Regulation		4 Water Regulation		5 Water Supply		6 Erosion Control		7 Soil Formation		8 Nutrient Cycling		9 Waste Treatment			10 Pollination		11 Biological Control	
			1997	2011	1997	2011	1997	2011	1997	2011	1997	2011	1997	2011	1997	2011	1997	2011	1997	2011		1997	2011	1997	2011
Marine	36,302	36,302	48		66		10	13									583	294	0	0			11	10	1
Open Ocean	33,200	33,200	53		65								407				163	163					7	7	
Coastal	3,102	3,102			75		121	153					4,769			5,074	1,693	2	1			53	46	11	
Estuaries	180	180			479		782						25,368			29,118						108		180	
Seagrass/Algae Beds	200	234			479								25,368			26,223									
Coral Reefs	62	28			1,188		3,795	16,991					153,214					80	85			7	7	10	
Shelf	2,660	2,660														1,975	1,975					54	54		
Terrestrial	15,323	15,323	6	4	62	277	136	62	100	122	152	136	52	95	5	62	158	26	205	1,476	11	15	12	63	9
Forest	4,855	4,261		4	194	711	3	19	3	3	4	143	132	100	14	14	498	66	120	120		9	3	169	-
Tropical	1,900	1,258		12	307	2,044	7	66	8	8	10	27	337	337	14	14	1,272	3	120	120		30		11	
Temperate/Boreal	2,955	3,003			122	152			0	0		191			14	14		93	120	120			6	235	
Grass/Rangelands	3,898	4,418	9	9	0	40			3	3		60	39	44	2	2			120	75	35	35	31	31	
Wetlands	330	188	183		200	6,264	4,596	21	1,789	5,244	959	-	3,507			577	5,765	111,345				-	303	419	
Tidal Marsh/Mangroves	165	128			65	2,538	5,351				1,217		3,929			45	9,240	162,125						233	
Swamps/Floodplains	165	60	366		488	9,991	2,986	41	5,606	10,488	408		2,607			1,713	2,289	3,013					948	605	
Lakes/Rivers	200	200						7,514	7,514	2,922	1,808							918	918						
Desert	1,925	2,159																							
Tundra	743	433																							
Ice/Rock	1,640	1,640																							
Cropland	1,400	1,672				411					400		107		532				397		19	22	33	33	
Urban	332	352				905				16															
Total	51,625	51,625	36	1	7	277	136	52	93	101	152	136	52	95	5	12	158	26	44	118	11	15	12	63	5

Notes:

1. Numbers in the body of the table are in \$2007 ha-1 yr-1

Row and column totals are in e9 \$ yr-1

ie. Column totals (in e9 \$/yr) are the sum of the products of the per ha services in the table and the area of each biome, not the sum of the per ha services themselves.

2. Some values may have changed due to reclassifying the service. For example, gas regulation for Swamps/Floodplains was reclassified in 2011 to climate regulation

Indicates values used in Costanza et al. 1997, converted to US\$2007
 Indicates values derived directly from the ESV database
 Indicates values used in de Groot et al. 2012, converted in US\$2007

12 bitat/ fugia	13 Food Production		14 Raw Materials		15 Genetic Resources		16 Recreation		17 Cultural		Total Value per ha	Total Value per ha	Ratios	A. Original	B. Change unit values only	C. Change area only	D. Change both unit values and area	
	2011	1997	2011	1997	2011	1997	2011	1997	2011	1997	2011	2011/1997		Assuming 1997 area and 1997 unit values	Assuming 1997 area and 2011 unit values	Assuming 2011 area and 1997 unit values	Assuming 2011 area and 2011 unit values	
														(€12 2007\$/yr)				
												1997	2011	2011	2011			
15	30	120	1	25		32	10	369	103	17	796	1,368	1.72	28.9	60.5	29.5	49.7	
	21	93	0	8		5		319	105		348	660	1.89	11.6	21.9	11.6	21.9	
172	128	405	5	203		322	113	903	85	202	5,592	8,944.04	1.60	17.3	38.6	18.0	27.7	
194	719	2,384	35	12		180	526	256	40	43	31,509	28,916	1	5.7	5.2	5.7	5.2	
194		2,384	3	12		180		256		43	26,226	28,916	1	5.2	5.8	6.1	6.8	
16,210	304	677	37	22,000		33,048	4,150	96,302	1	12,535	8,384	352,257	42	0.5	21.7	0.2	9.9	
	94	94	3	3					97	97	2,222	2,222	1	5.9	5.9	5.9	5.9	
675	54	685	64	87		7	591	51	469	27	56	1,109	4,901	4.42	17.0	84.5	12.1	75.1
619	59	270	191	152		22	448	91	953	3	1	1,338	3,800	2.84	6.5	19.5	4.7	16.2
39	45	200	435	84		57	1,517	154	867	2	2	2,769	5,382	1.94	5.3	10.2	3.5	6.8
862	69	299	34	181				50	989	3	1	417	3,137	7.52	1.2	9.3	1.3	9.4
1,214	79	1,192		54		0	1,214	2	26		167	321	4,166	12.99	1.2	16.2	1.4	18.4
12,452	354	952	146	416		243	793	2,199	1,215	636	20,404	140,174	6.87	6.7	36.2	3.4	26.4	
17,138	643	1,111	224	358		311	908	2,193			13,786	193,843	14.06	2.3	32.0	1.8	24.8	
2,455	65	614	68	539		99	678	2,211	2,430	1,992	27,021	25,681	0.95	4.5	4.2	1.6	1.5	
	57	106						317	2,166		11,727	12,512	1.07	2.3	2.5	2.3	2.5	
	75	2,323		219		1,042		82			126	5,567	44.04	0.2	7.8	0.2	9.3	
								5,740				6,661			2.2		2.3	
583	52	673	41	78		7	468	51	463	39	39	861	4,073		45.9	145.0	41.6	124.8